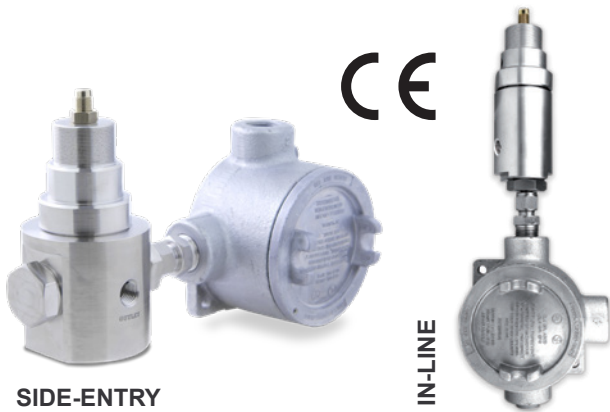


XHS310 Datasheet

SINGLE-HEATED PRESSURE REGULATOR



Gas Liquid Diaphragm Piston Self-Venting Non-Venting
 Max Inlet: 414 bar (6,000 psi) Max Outlet: 35 bar (510 psi) Cv 0.06



SIDE-ENTRY

IN-LINE

INTRODUCING THE XHS310...

The XHS310 is an economical single heated regulator, available in side-entry (SE) or in-line (IL) heat transfer options to maintain sample gases in their vapour state.

The side-entry design can be used where heat transfer is less critical, and where installations have height restrictions. The in-line design maximises the heat transfer area via a spiral machined heater sheath, which mixes the gas and ensures efficient heat transfer.

Its electrical enclosure meets the requirements of IP66 and NEMA 4 specifications.

ATEX AND IECEX MARKINGS

The markings on the equipment includes:

Ex II 2 G
 Ex db IIC T3 Gb
 $-40^{\circ}\text{C} \leq T_a \leq 55^{\circ}\text{C}$
 CE 2183

STANDARD MATERIALS OF CONSTRUCTION

PART	MATERIALS
Body and Bonnet	ASTM A479 316/316L Stainless Steel (UNS S31600/S31603)
Main Valve Pin	ASTM A479 316/316L Stainless Steel (UNS S31600/S31603)
Soft Seat	PEEK™ (450G)
	PCTFE (Kel-F)
Valve Spring	Inconel® X750 (UNS N07750)
Diaphragm	Inconel® X750 (UNS N07750)
O-Rings	FKM/FPM (Viton)
Electric Enclosure	Feraloy Iron Alloy

SPECIFICATION

Max. Rated Inlet Pressure	414 bar (6,000 psi)
Outlet Ranges	Up to 35 bar (510 psi)
Design Proof Pressure	150% max. working pressure
Seat Leakage	In accordance with ANSI/FCI 70-3
Weight	4.8kg (10.6lbs)

Note: Pressure regulator rating may be limited by connection type, Cv and/or seat material. Contact the office for specific pressure or temperature requirements.

FEATURES AND BENEFITS

1 SIDE-ENTRY OR IN-LINE

Choice of heater cartridge position caters for various application requirements.

2 100W HEATER CARTRIDGE

Efficient heater to maintain sample gases in their vapour state.

3 ATEX AND IECEX CERTIFIED

Certified for use in category 2 zone 1 hazardous areas. Certificates viewable on www.pressure-tech.com.

4 INCONEL® X750 DIAPHRAGM

For ultimate strength and reliability on clean or corrosive applications.

NOTE: Product availability and specifications contained herein are subject to change without notice. Consult local distributor or factory for potential revisions and/or service related issues. Pressure Tech Ltd support with product selection recommendations only - it is the users responsibility to ensure the product is suitable for their specific application requirements.



PRESSURE TECH LTD
 Unit 24, Graphite Way, Hadfield, Glossop, Derbyshire, UK, SK13 1QH
 T +44 (0)1457 899 307
 E sales@pressure-tech.com
 W www.pressure-tech.com

DESIGNED, MANUFACTURED AND BUILT IN THE UK

180523

PAGE:
1 OF 4

XHS310 Datasheet

SINGLE-HEATED PRESSURE REGULATOR



● Gas ● Liquid |
 ● Diaphragm ● Piston |
 ● Self-Venting ● Non-Venting |
 Max Inlet: 414 bar (6,000 psi) |
 Max Outlet: 35 bar (510 psi) |
 Cv 0.06

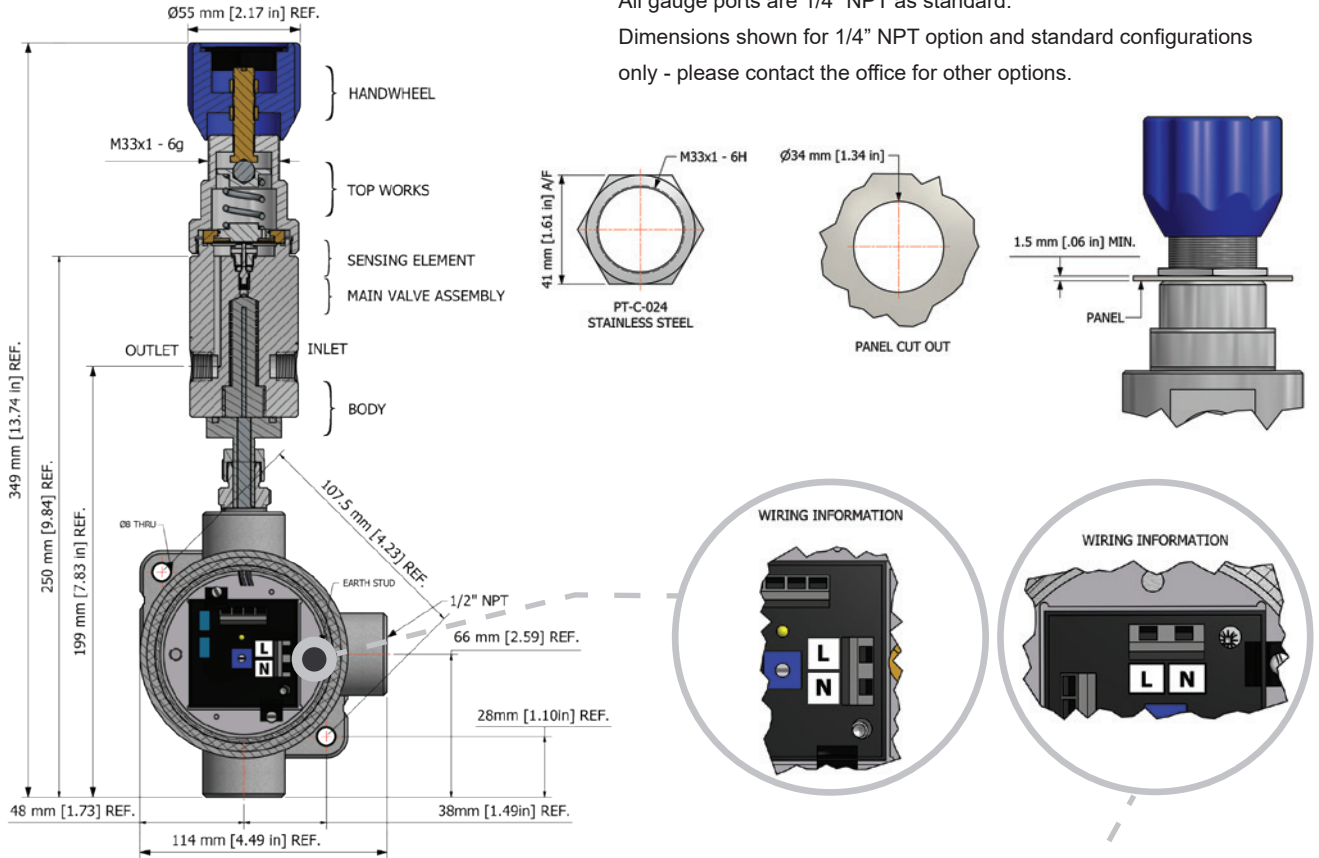
DRAWINGS AND INSTALLATION DIMENSIONS

Note:

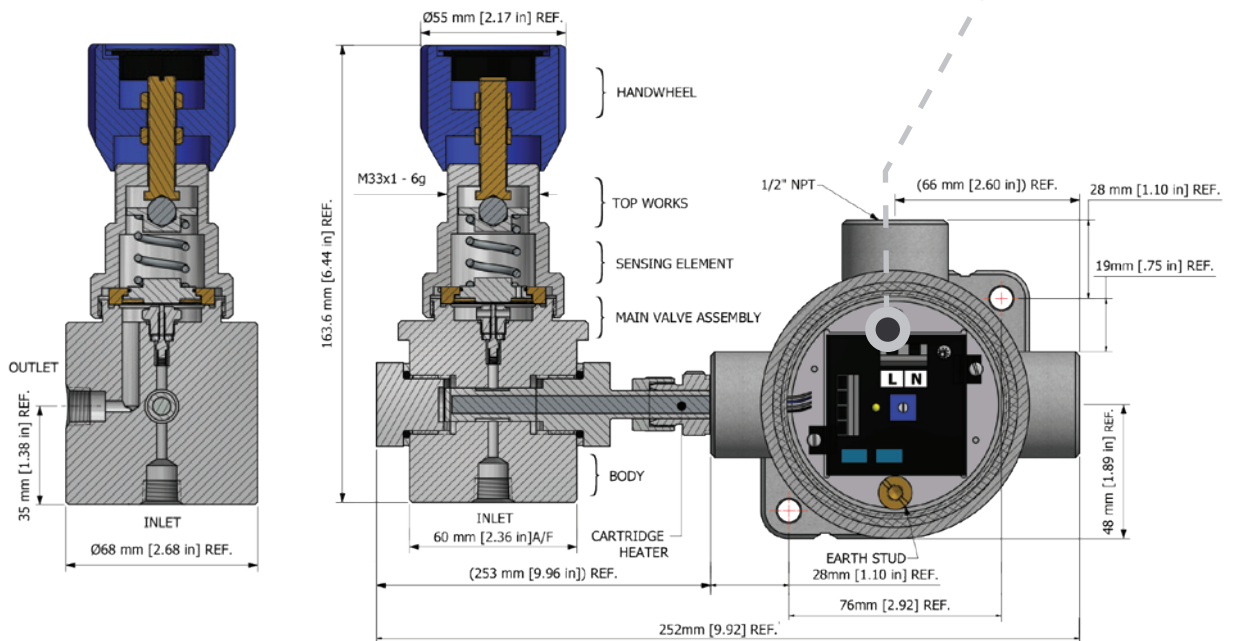
All gauge ports are 1/4" NPT as standard.

Dimensions shown for 1/4" NPT option and standard configurations only - please contact the office for other options.

IN-LINE



SIDE-ENTRY



NOTE: Product availability and specifications contained herein are subject to change without notice. Consult local distributor or factory for potential revisions and/or service related issues. Pressure Tech Ltd support with product selection recommendations only - it is the users responsibility to ensure the product is suitable for their specific application requirements.



PRESSURE TECH LTD
 Unit 24, Graphite Way, Hadfield, Glossop, Derbyshire, UK, SK13 1QH
 T +44 (0)1457 899 307
 E sales@pressure-tech.com
 W www.pressure-tech.com

DESIGNED, MANUFACTURED AND BUILT IN THE UK

180523

PAGE:
2 OF 4

XHS310 Datasheet

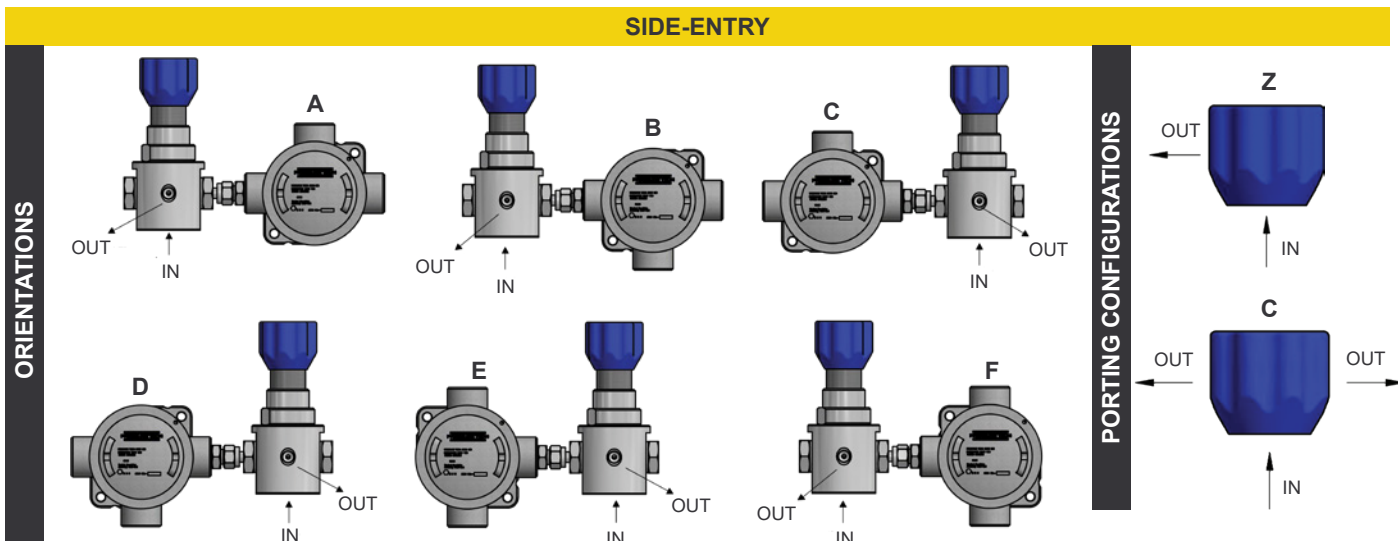
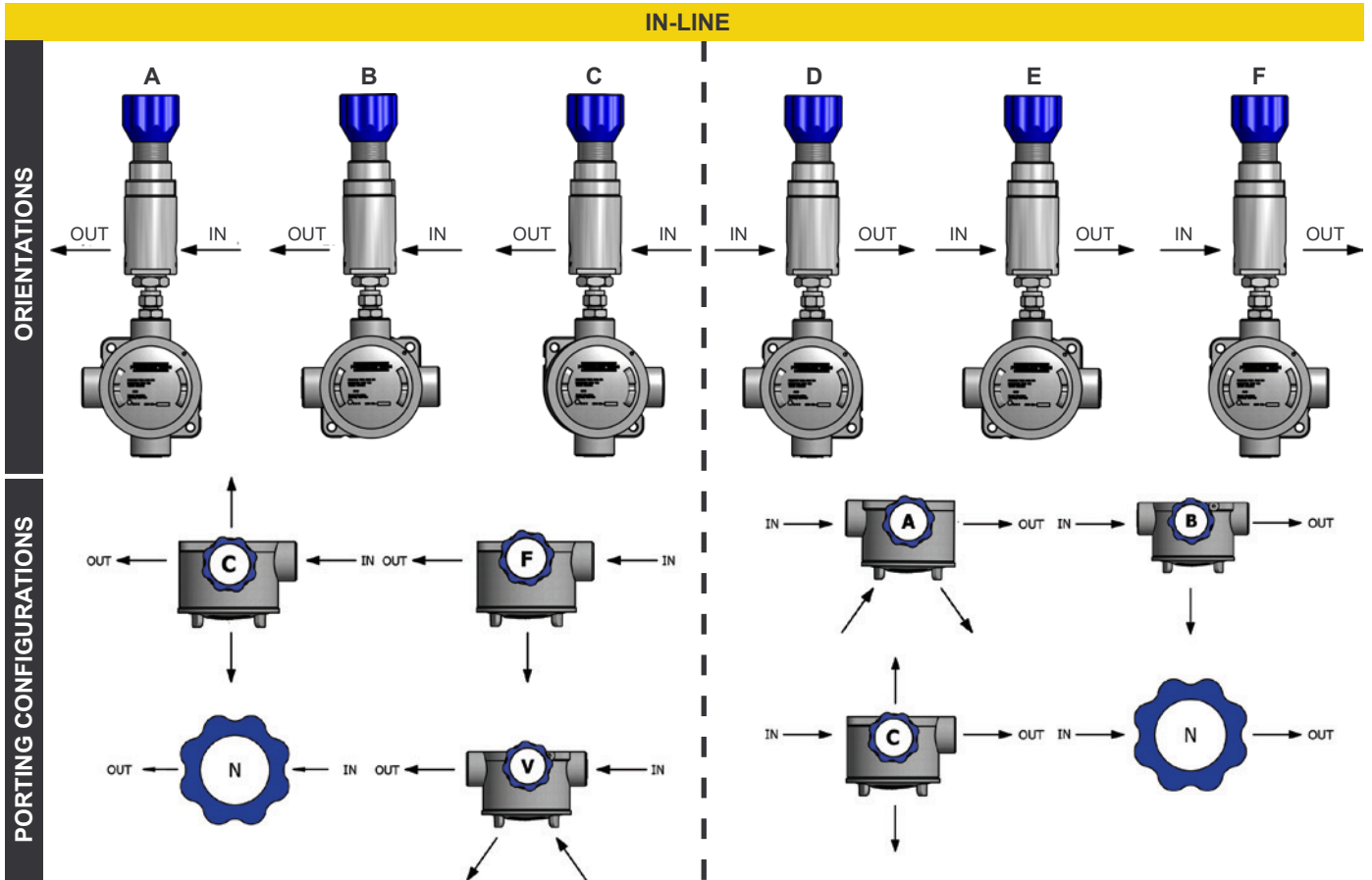
SINGLE-HEATED PRESSURE REGULATOR



Gas Liquid | Diaphragm Piston | Self-Venting Non-Venting | Max Inlet: 414 bar (6,000 psi) | Max Outlet: 35 bar (510 psi) | Cv 0.06

ASSEMBLY ORIENTATIONS

To select a valid assembly, choose your required orientation and then combine with a compatible porting configuration. Please note - gauge ports must be in a forward-facing position.



NOTE: Product availability and specifications contained herein are subject to change without notice. Consult local distributor or factory for potential revisions and/or service related issues. Pressure Tech Ltd support with product selection recommendations only - it is the users responsibility to ensure the product is suitable for their specific application requirements.



PRESSURE TECH LTD
 Unit 24, Graphite Way, Hadfield, Glossop, Derbyshire, UK, SK13 1QH
 T +44 (0)1457 899 307
 E sales@pressure-tech.com
 W www.pressure-tech.com

180523

PAGE: 3 OF 4

DESIGNED, MANUFACTURED AND BUILT IN THE UK

XHS310 Datasheet

SINGLE-HEATED PRESSURE REGULATOR



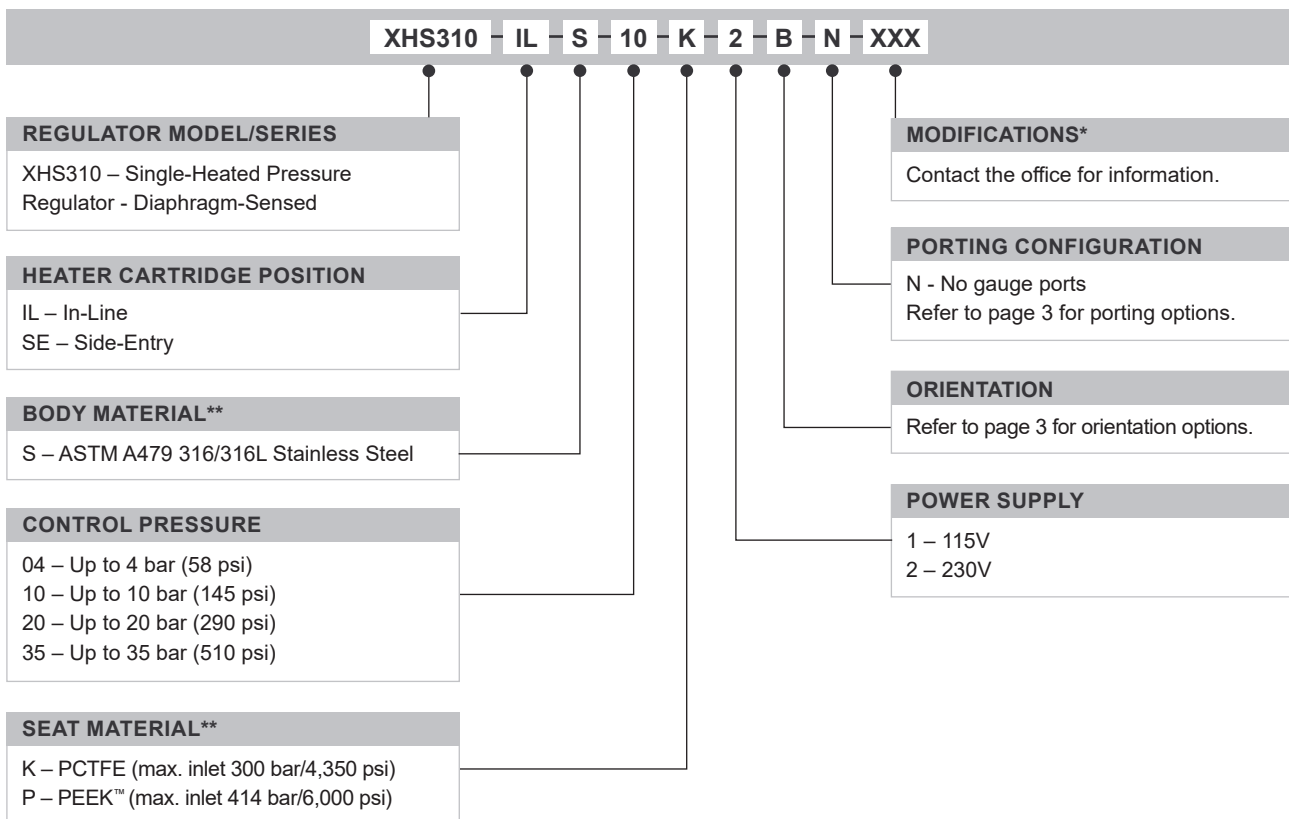
Gas
 Liquid
 Diaphragm
 Piston
 Self-Venting
 Non-Venting
 Max Inlet: 414 bar (6,000 psi)
 Max Outlet: 35 bar (510 psi)
 Cv 0.06

FLOW CURVE

Please contact the office for further information.

ORDERING INFORMATION

To build a Pressure Tech part number, simply combine the characters identified below in sequence:



OPTIONAL EXTRAS		
	PART NUMBER	DESCRIPTION
Service Kit	SRK-LF310...	Various options available
Panel Mounting Ring	PT-C-024	-

Note: Ancillary Equipment also available

TRADEMARKS: PEEK™ is a trademark of Victrex PLC
Inconel® is a registered trademark of Inco Alloys International

* Where applicable
** Other materials may be available - please contact the office

NOTE: Product availability and specifications contained herein are subject to change without notice. Consult local distributor or factory for potential revisions and/or service related issues.
Pressure Tech Ltd support with product selection recommendations only - it is the users responsibility to ensure the product is suitable for their specific application requirements.



PRESSURE TECH LTD
 Unit 24, Graphite Way, Hadfield, Glossop, Derbyshire, UK, SK13 1QH
 T +44 (0)1457 899 307
 E sales@pressure-tech.com
 W www.pressure-tech.com

DESIGNED, MANUFACTURED AND BUILT IN THE UK

180523

PAGE:
4 OF 4